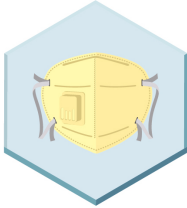


PPE DONNING AND DOFFING

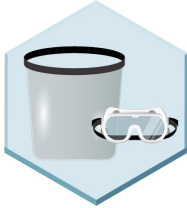
PERSONAL PROTECTIVE EQUIPMENT



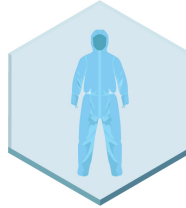
Surgical or N95 masks



2 pairs of gloves



Goggles or Face shield



Gown



Head cover



Shoe cover

PREPARATION FOR DONNING PPE



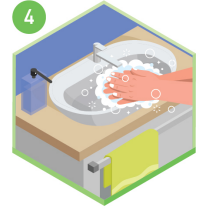
1 Prepare for shift to begin by taking your meal, using the washroom, drinking water prior to entering the area designated for wearing PPE.



2 Remove all accessories and jewelry, and wear scrubs.

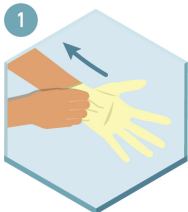


3 Only put on and take off PPE in designated area. PPE donning and doffing areas should be separate.

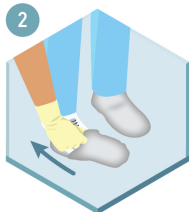


4 Wash hands thoroughly with soap and water or use an alcohol-based sanitizer with more than 60% alcohol content.

SEQUENCE FOR DONNING PPE



1 Wear first pair of gloves.



2 Wear shoe covers.



3 Wear clean, disposable, non-permeable gown.



4 Cover your nose and mouth with a well-secured mask.



5 Wear eye cover.



6 Wear a hood to cover your head.



7 Wear second pair of gloves. Check fitness of gown.

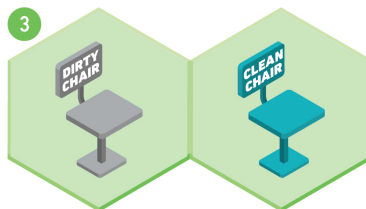
PREPARATION FOR DOFFING PPE



1 Go to the designated doffing area.



2 Doffing buddy is required to help with proper doffing of PPE.

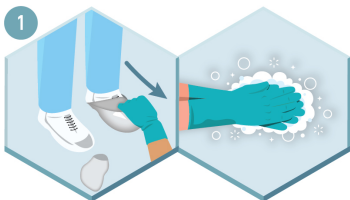


3 There should be a 'dirty chair' and a 'clean chair' in the doffing area.

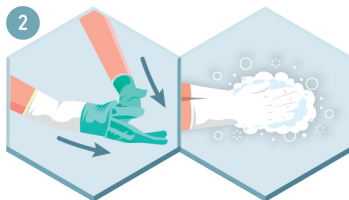


4 Disinfect hands, while wearing gloves, using soap and water, or alcohol-based hand rub.

SEQUENCE FOR DOFFING OF PPE



1 Sit on the 'Dirty Chair'. Remove shoe cover touching outer surface. Perform hand hygiene.



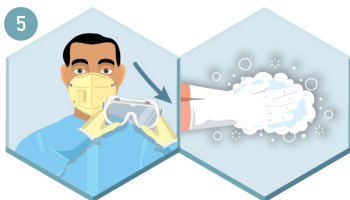
2 Remove outer gloves. Perform hand hygiene.



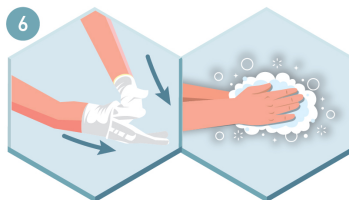
3 Remove hood. Perform hand hygiene.



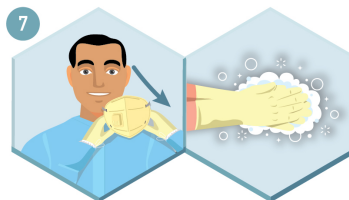
4 Remove gown carefully using rolling inside out technique. Perform hand hygiene.



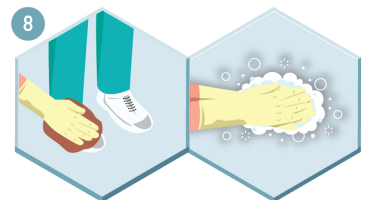
5 Remove eye cover (goggles/face shield). Perform hand hygiene.



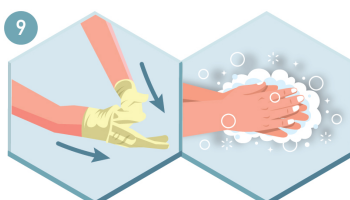
6 Remove inner gloves. Perform hand hygiene.



7 Wear a fresh pair of gloves and remove facemask slowly. Perform hand hygiene.



8 Sit on the 'Clean Chair' and clean your shoes with alcohol swab. Perform hand hygiene.



9 Remove last pair of gloves. Perform hand hygiene.



10 All disposable PPE should be discarded in a covered bin.

LET'S MAKE INFECTION CONTROL A PRIORITY!



Joint Effort for Elimination of Tuberculosis



www.projectjeet.in



facebook.com/projectjeet



@Jeetind18